

bk3500 Quick Start Guide

Exam Management
(Start/Change/
End exam)

Mode Function buttons
(on/off switches)

Parameter buttons
(Adjust with touch screen dials)



Function buttons
(Measure/Label/Report/Settings/Help/Home)

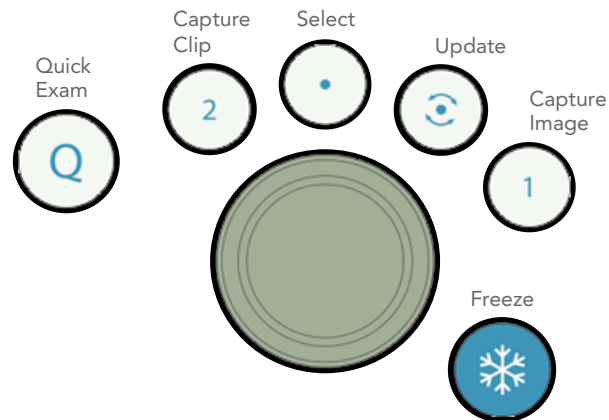
Mode buttons
(Switch imaging mode)

Basic/Advanced


You can switch touch screen layout between Basic and Advanced in **Settings** . This is Basic layout.



The power button is located top left on the scanning engine.



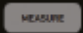
Begin an Exam

1. Press 
2. Enter **Patient Information** and tap **Next**.
3. Select a **Transducer** connected to the system.
4. Select **Application** based on your transducer selection.
5. Select **Preset**.
6. Start the exam.

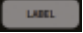


bk3500 Functions

Measurements



1. Tap  to get measurement calipers.
2. Measurements specific to the active application are available. A measurement package can be changed in the drop down menu.

Label an Exam

1. Tap , select **Text** and select or type in a label text.
2. Select the **Bodymarks** tab for bodymarks.

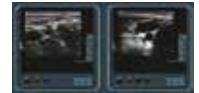


Capture Images and Clips

1. Press  to capture a still image.
2. Press  to capture a clip.
 - a. on the live image to store a prospective capture.
 - b. on the frozen image to store a retrospective capture.

Review Images and Clips

1. Doubleclick an image thumbnail on the clinical display to review an acquired image or clip.
2. Tap **CLOSE** on the touch screen to close the image or clip review.



Using Worksheets

Tap  to fill in a worksheet for use in your report.

Create a Report

Tap  to review, edit, save and print a report.

End an Exam

Tap the touch screen  button.